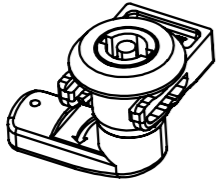


Product Code

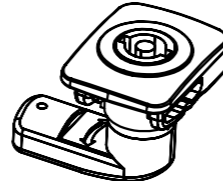
Version 1 with Driver

Version 2 with Driver

Group Code	Version	Material and Finish	Driver	Door Thickness	Cam	Left Hand	Right Hand
761	1	MF	DD	DT	CC	001	002
		Driver	See Table	See Table	See Table	See Table	See Table

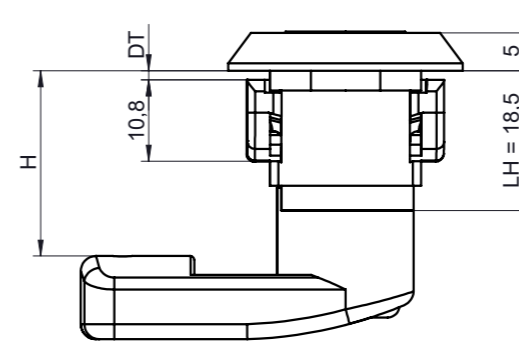


Group Code	Version	Material and Finish	Driver	Door Thickness	Cam	Left Hand	Right Hand
761	2	MF	DD	DT	CC	001	002
		Driver	See Table	See Table	See Table	See Table	See Table

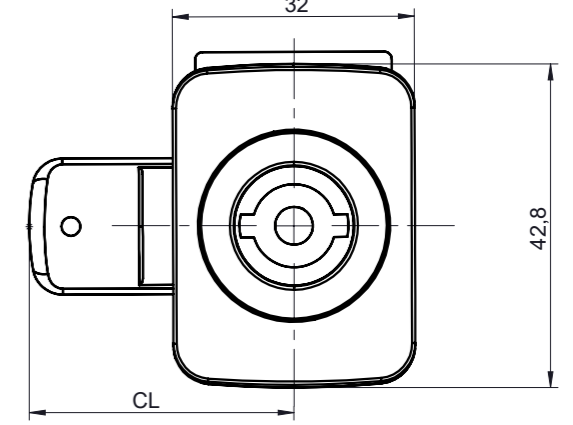
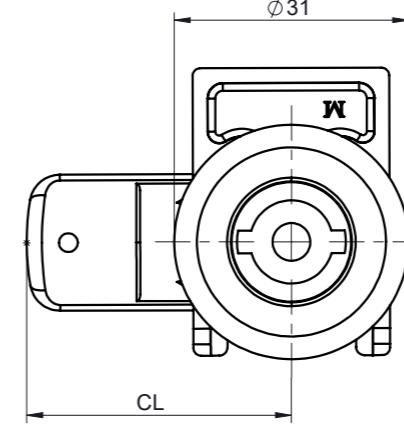
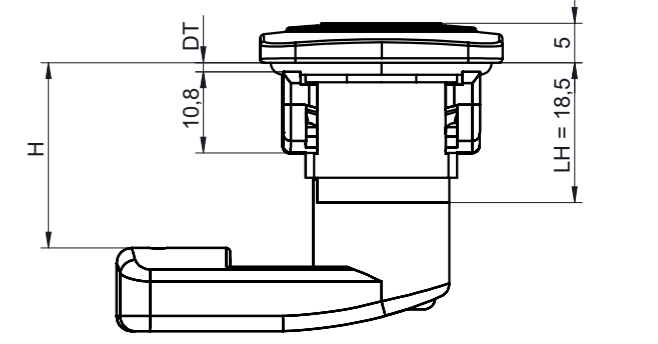


Dimensions

Version 1 Dimensions



Version 2 Dimensions



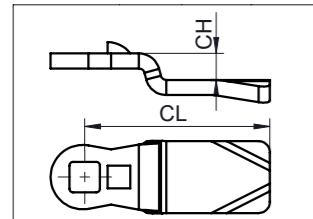
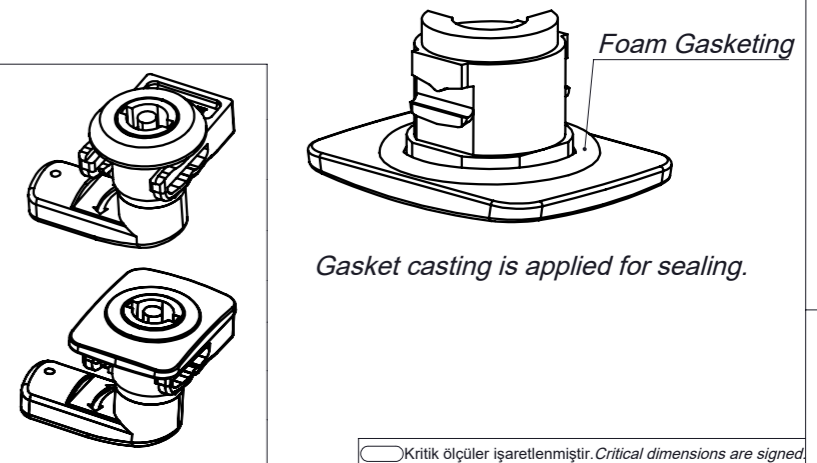
NOTES :

- Easy assembly by plastic clips.
- All locks components are "RoHS" compliant.
- Suitable for left and right applications.
- Applicable on different door thickness
- Suitable for IP66 sealing class. For more Sealing request please contact.
- Various driver options are possible.

Please contact us for packaging details and special packaging requests.

Material

Product Name	Material	Finish
Driver	Zamak 5/Plastic	Chrome/Black Coated
M6 Screw	Steel	Zn
Cam	Steel/Plastic	Zn/Black
Spring	Steel	Zn
Housing	Plastic	Black
Nut	Zamak 5	*
Clips	Plastic	Black



Cam (CC)

CC Code	CH	CL	LH
30	0	45	18,5
17	1	45	18,5
35	2	45	18,5
20	0	38	18,5
31	3	45	18,5
34	6	45	18,5

For more cams please check our catalogue pages : 170 -171

Finish (F)	
Chrome Plate	1
Black Coated	2
Uncoated	0

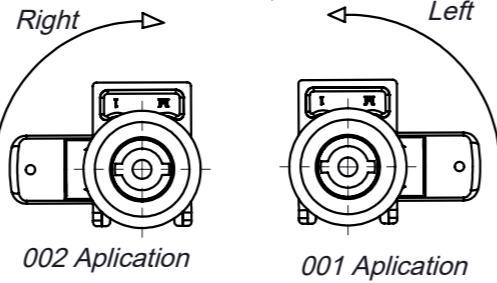
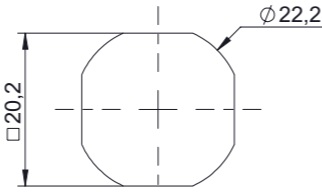
Material (M)	
Zamak 5	1
Plastic	2

Please contact us for more material and coating requests.

Door Thickness (DT)	
1,2-1,8mm Panel	12
1,8-2,3mm Panel	23

Please contact us for different door thickness requests.

Cut Out



Driver (DD)

Please contact us for more driver requests.

Rev. No	Değişiklik No / Change No	Açıklamalar / Description	Değ. Tarih / Change Date	Değ. Yapan / Changed By	İmza / Signature	Bölüm / Department

Cizim Tarihi / Drawing Date	Çizen / Drawn By	Kontrol / Checked By	Onay / Approved by	Parça Adı / Part Name	Ölçek / Scale	Sayfa No / Page No
12.05.2022	Kaan Kanburoğlu	Kaan Kanburoğlu	Uğur BÜYÜK	761 Quarter Turn Lock - Easy Fixing (with Driver)	1:2	3 / 1

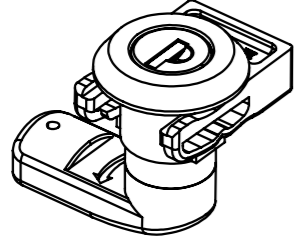


Product Code

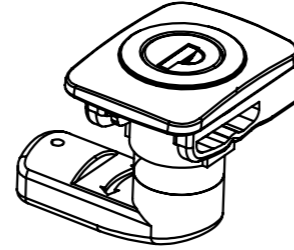
Version 1 with Cylinder

Version 2 with Cylinder

Group Code	Version	Material and Finish	Cylinder	Door Thickness	Cam	Left Hand	Right Hand
761	1	20 <small>Housing</small> Only Plastic	DD <small>See Table</small>	DT <small>See Table</small>	CC <small>See Table</small>	001 <small>Left Hand</small>	002 <small>Right Hand</small>

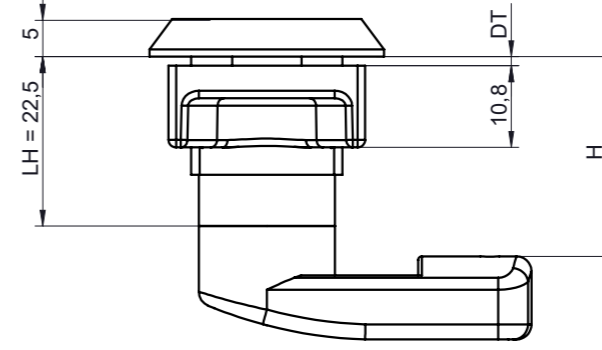


Group Code	Version	Material and Finish	Cylinder	Door Thickness	Cam	Left Hand	Right Hand
761	2	20 <small>Housing</small> Only Plastic	DD <small>See Table</small>	DT <small>See Table</small>	CC <small>See Table</small>	001 <small>Left Hand</small>	002 <small>Right Hand</small>

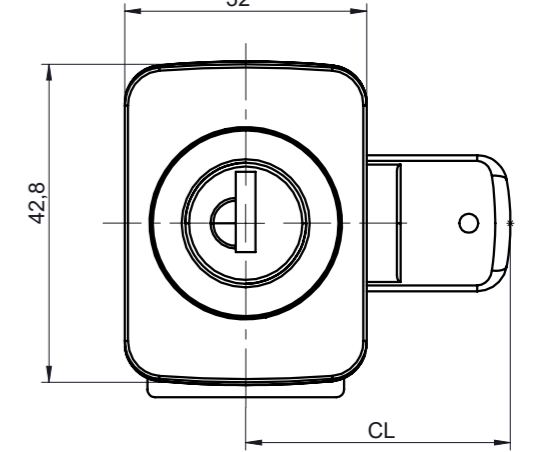
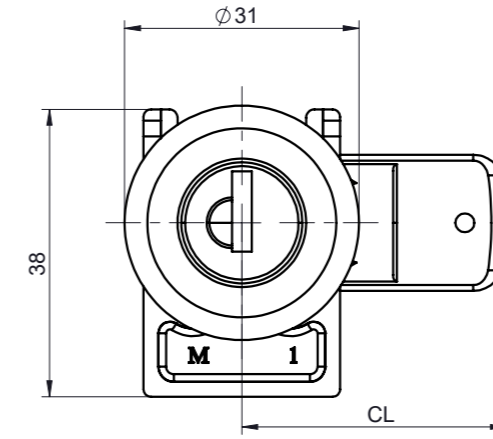
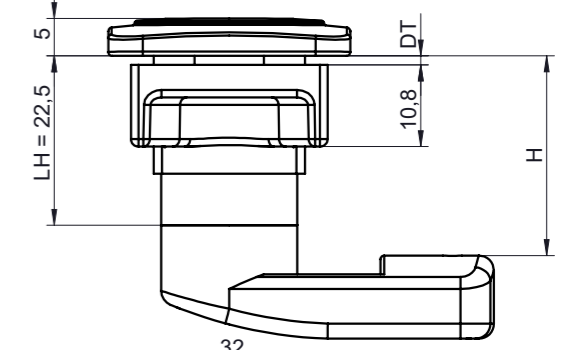


Dimensions

Version 1 Dimensions



Version 2 Dimensions



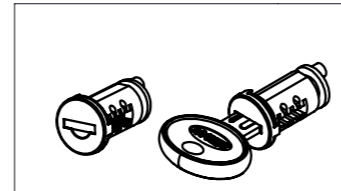
Finish (F)	
Uncoated	0

Material (M)	
Plastic	2

Please contact us for more material and coating requests.

Door Thickness (DT)	
1,2-1,8mm Panel	12
1,8-2,3mm Panel	23

Please contact us for different door thickness requests.

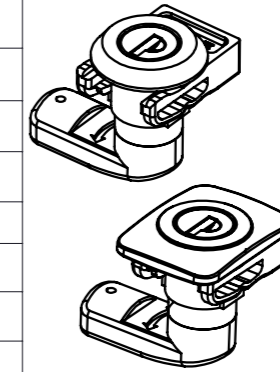


Cylinder (DD)	
Keyed alike	03
Keyed differ	32
Master System	04
Euro Key (5333)	05
CH-751	07

Stainless steel dust caps.

Material

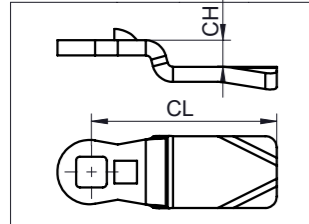
Product Name	Material	Finish
Cylinder	Zamak 5	Ni
M6 Screw	Steel	Zn
Cam	Steel/Plastic	Zn/Black
Spring	Steel	Zn
Housing	Plastic	Black
Nut	Zamak 5	*
Clips	Plastic	Black



NOTES :

- Easy assembly by plastic clips.
- All locks components are "RoHS" compliant.
- Suitable for left and right applications.
- Applicable on different door thickness
- Suitable for IP65 sealing class. For more Sealing request please contact.
- Various driver options are possible.

Please contact us for packaging details and special packaging requests.

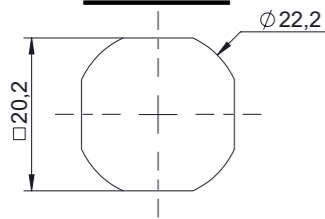


Cam (CC)

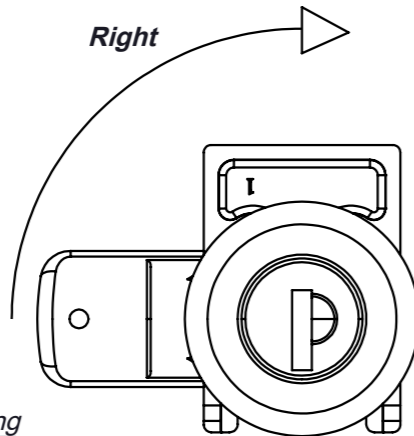
CC Code	CH	CL	LH
30	0	45	18,5
17	1	45	18,5
35	2	45	18,5
20	0	38	18,5
31	3	45	18,5
34	6	45	18,5

For more cams please check our catalogue pages : 170 -171

Cut Out

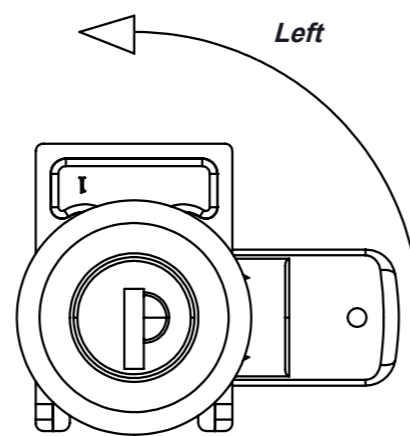


Right

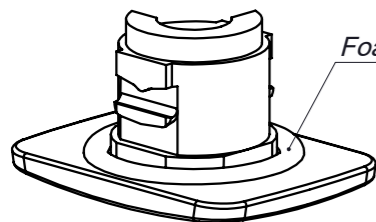


002 Application

Left



001 Application



Foam Gasketing

Gasket casting is applied for sealing.

○ Kritik ölçüler işaretlenmiştir. Critical dimensions are signed.

Resim üzerinden ölçü almayınız! Do not scale drawing!

Çizim Tarihi	12.05.2022	İmza	Yüzey	Malzeme	Ağırlık(gr)	Parça No/
Drawing Date		Signature	Surface	Material	Weight	Part No
Çizen	Kaan Kanburoğlu		See	See		See
Drawn By			Table	Table		Table
Kontrol	Kaan Kanburoğlu					
Checked By						
Onay	Uğur BÜYÜK					
Approved by						

Parça Adı	Ölçek/	1:2	Sayfa No/
Part Name:	Scale		Page No
761 Quarter Turn Lock -			3 / 2
Easy Fixing (with Cylinder)			

Rev. No	Değişiklik No	Açıklamalar	Değ. Tarih	Değ. Yapan	İmza	Bölüm	Trade Drawing
Change No		Description	Change Date	Changed By	Signature	Department	



H

G

F

E

D

C

B

A

Genel
ToleranslarGeneral
Tolerances

DIN 2768m

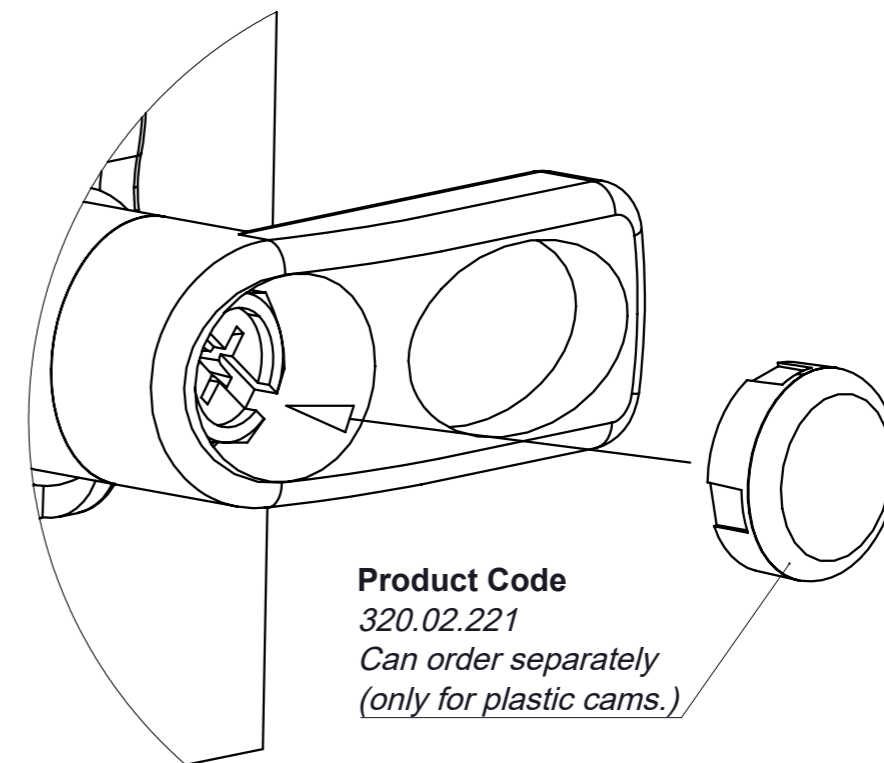
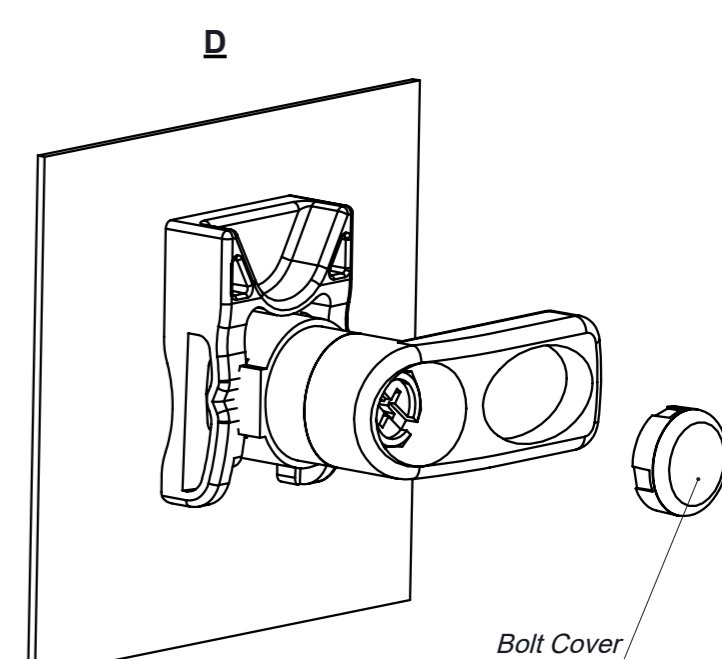
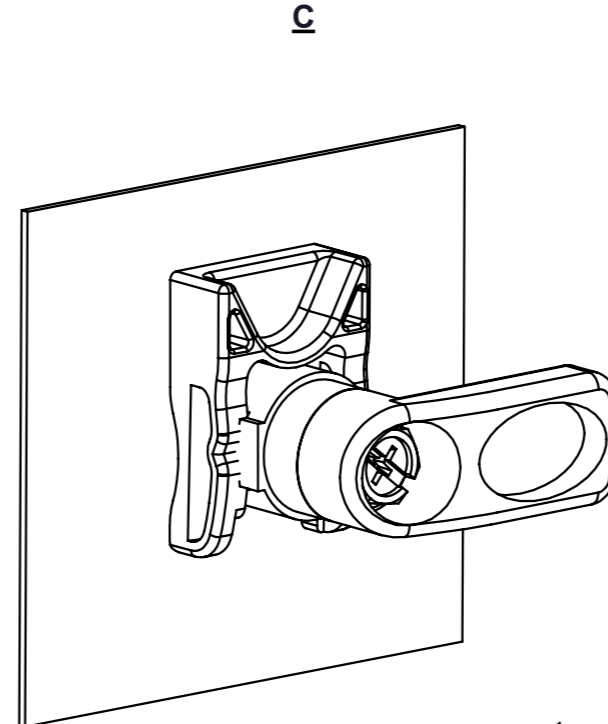
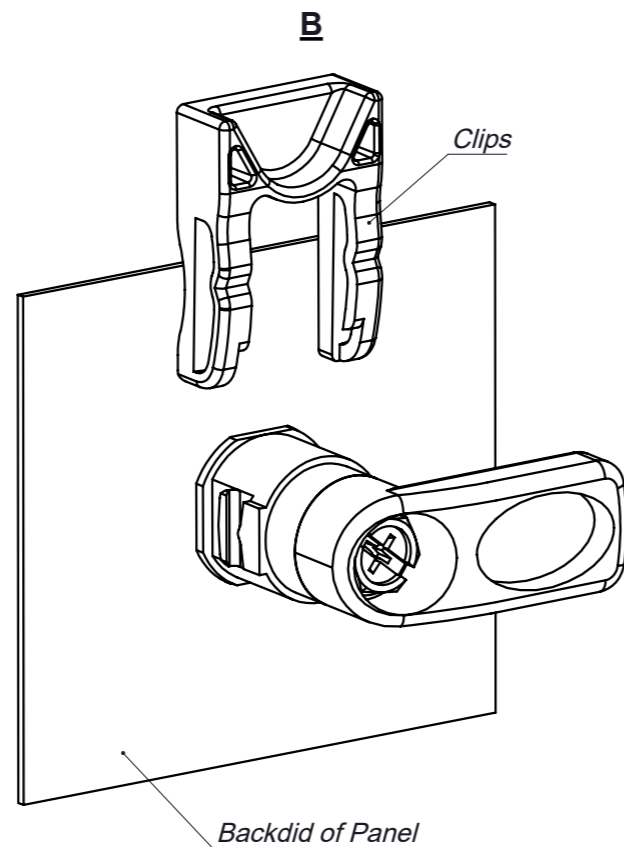
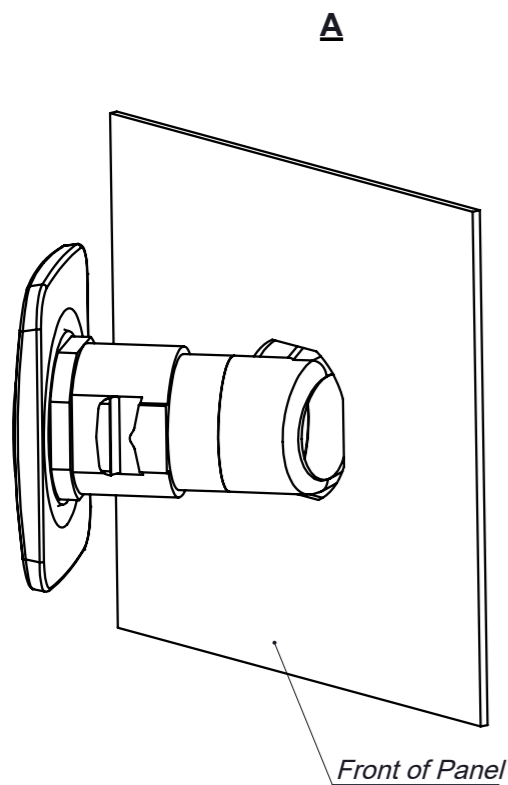
Nominal / Nominal

0.5-3
±0.13-6
±0.16-30
±0.230-120
±0.3120-400
±0.5400 >
±0.8

Açı / Angle

0° < 10°
±1°10° < 50°
±0° 30'50° < 120°
±0° 20'120° >
±0° 10'

Yarıçap/ Radius

0.5-3
±0.23-6
±0.56-30
±1**Assembly**

Product Code
320.02.221
Can order separately
(only for plastic cams.)

LOCK INSTALLATION:

1. Prepare the panel without burrs to the dimensions shown.

A. Pass the lock with washer attached through the passage size.

B. After passing the lock through the passage size, fix it with your hand from the front of the panel.

C. Insert the clips to fix the lock.

D. Install the bolt cover as shown. (It can be use only on plastic cams and bolt cover is optional, can order separately.)

Note : The assemblies of all versions are the same.

○ Kritik ölçüler işaretlenmiştir. Critical dimensions are signed.

Resim üzerinden ölçü almayınız! Do not scale drawing!

Rev. No	Değişiklik No Change No	Açıklamalar Description	Değ. Tarih Change Date	Değ. Yapan Changed By	İmza Signature	Bölüm Department	Çizim Tarihi Drawing Date	Çizen Drawn By	Kontrol Checked By	Onay Approved by	Parça Adı Part Name:	Yüzey Surface	Malzeme Material	Ağırlık (gr) Weight	Parça No/ Part No
							12.05.2022	Kaan Kanburoğlu	Kaan Kanburoğlu	Uğur BÜYÜK	761 Quarter Turn Lock - Easy Fixing	See Table	See Table	-	See Table
											mm	Ölçek/ Scale	1:2	Sayfa No/ Page No	3 / 3

