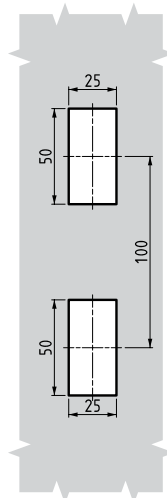
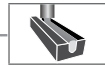


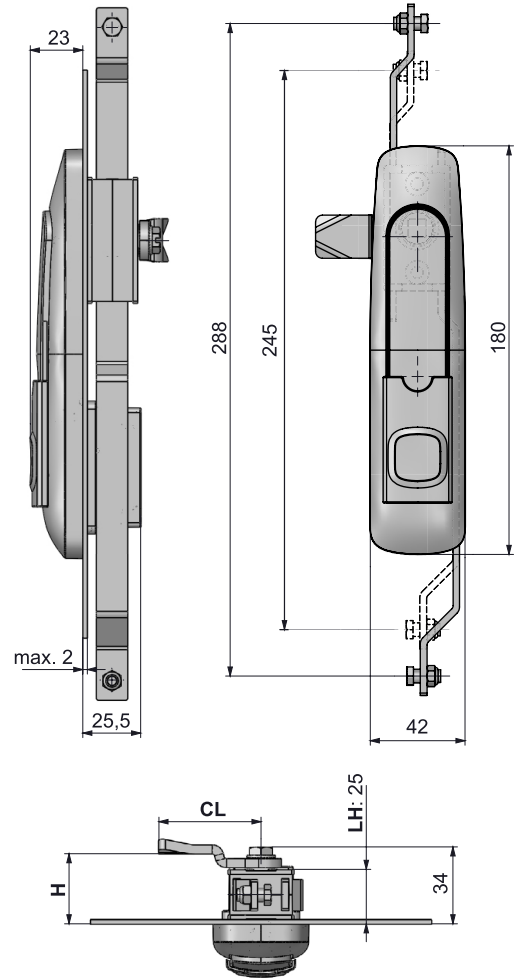
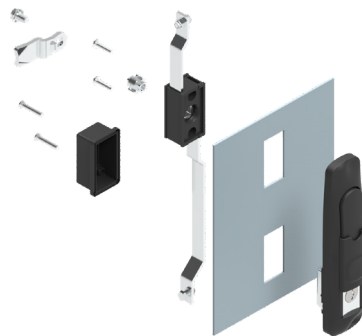
ROD-LATCH SYSTEM

MODULAR SYSTEM SWINGHANDLE

407



Cut Out



- Swing handle has a modular lock structure allows easy modification for customer requests
- Lock and modules could be ordered separately
- Single point locking and gearbox option is possible on same lock by an adaptor
- Padlock is optional
- Easy fixing option by plastic clips

MATERIAL

BODY PA6 GFR 30
HANDLE Zamak DIN-EN 1774-ZnAl4Cu1

MECHANISM: PA6 GFR 30
MODULE Zamak
CAM: Steel

CYLINDER TYPE		DD	Order code
	Stainless steel dust cap (Keyed alike)	03	MDL03
	Stainless steel dust cap (Keyed differ)	32	MDL32
	Euro key (5333)	05	MDL05
	CH751 (Stainless steel dust cap)	07	MDL07
DRIVER TYPE		DD	Order code
	5 mm Double bit	15	MDL15
	8 mm Square	28	MDL28
	9 mm Triangular	39	MDL39

MATERIAL	M	FINISH	F
Zamak	1	Chrome plated	1
		Black coated	2
Plastic	2	No finish	0

- For cams please check pages: 170 - 171
- For rods please check pages: 178 - 188
- For keys please check pages: 189 - 191

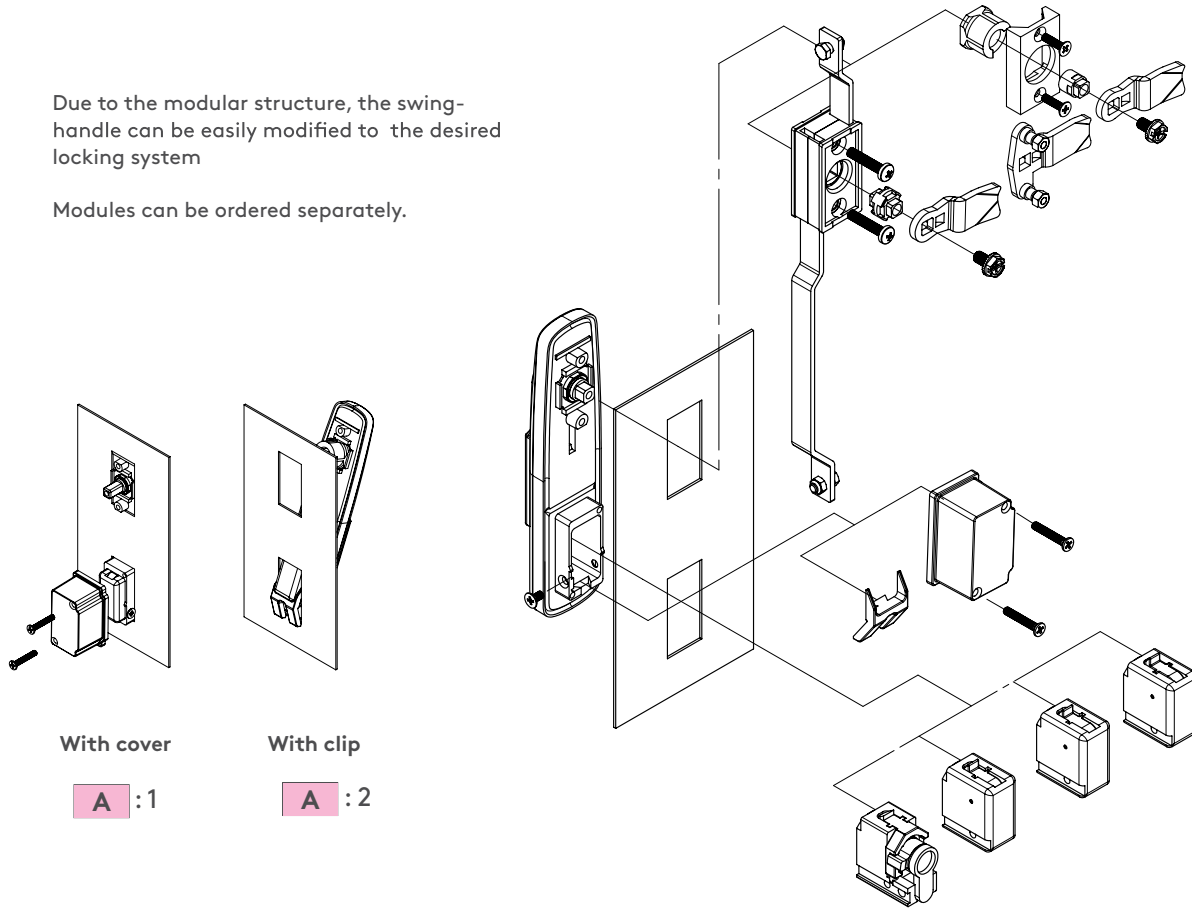
Group Code	Handle	Body	Module	Cam	Assembly	Padlock*
407	1	F	2	0	DD	CC
						A

*: add "1" for padlock application



Due to the modular structure, the swing-handle can be easily modified to the desired locking system

Modules can be ordered separately.



With cover

A :1

With clip

A :2

The set items can be ordered separately with their codes in below



MLS01

1-SET:

- Body
- Handle
- Dust cap
- Shaft

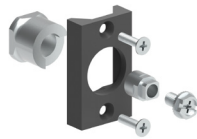


MLS02

1-SET:

- Plastic Mechanism
- Screws
- Cam Adapter

For multi point locking



MLS03

1-SET:

- Plastic Fixed Part
- Screws
- Cam Adapter

For single point locking

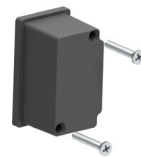


MDLXX

MODULES

- MDLXX

Please check the previous page



MLS05

1-SET:

- Plastic Fixed Part
- Screws

With this set the handle meet IP 65 specs.



320.02.246

1-PCS

- Clip-in part

With this clip-in part mounting time reduces by %50



DILLER

Please check the cams page 172 - 173