

**Version 1**

Grup Code: 112 - Version: 1 - Door Thickness: DT - Driver Type: DD - Cam: CC - 1

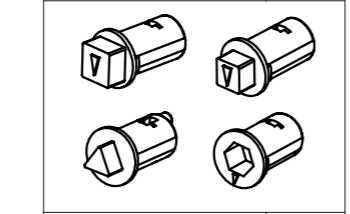
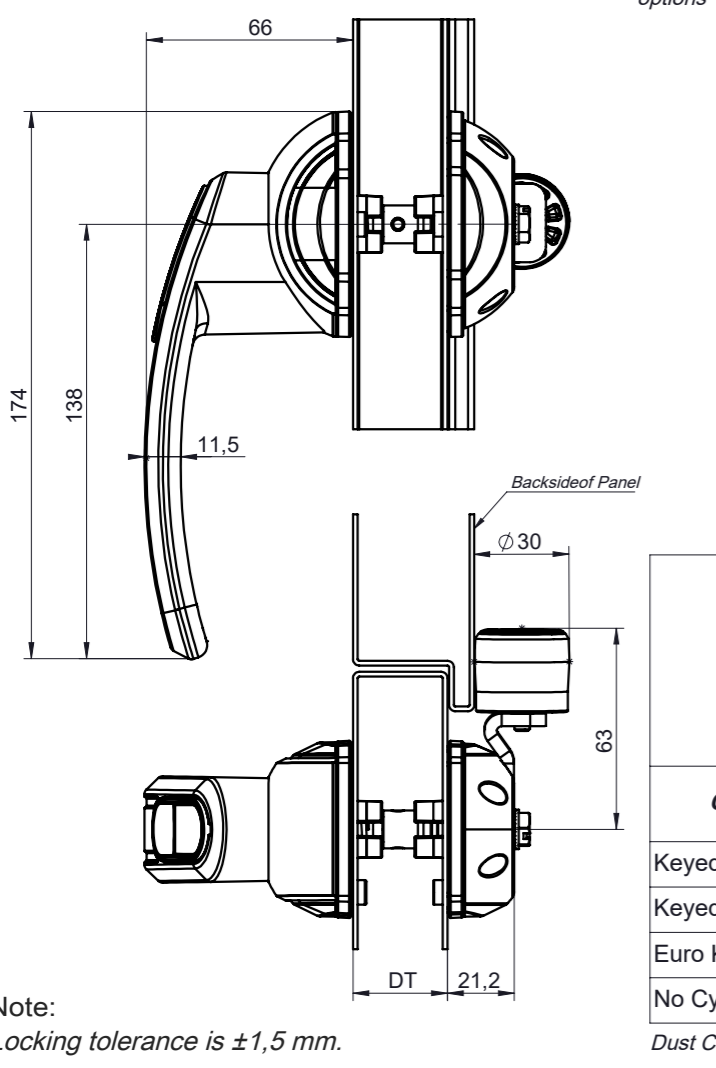
See Table (Door Thickness)  
See Table (Driver Type)  
For "Cam" options please see trade drawing page 5  
For only padlock options

**Version 2**

Grup Code: 112 - Version: 2 - Door Thickness: DT - Driver Type: DD - Cam: CC - 1 - 001 (Left Hand) / 002 (Right Hand)

See Table (Door Thickness)  
See Table (Driver Type)  
For "Cam" options please see trade drawing page 5  
For only padlock options

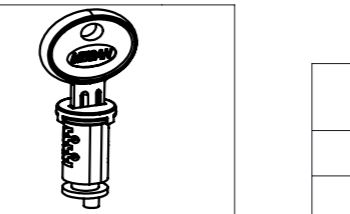
Nominal / Nominal							Açı / Angle				Yarıçap / Radius		
0.5-3	3-6	6-30	30-120	120-400	400 >	0° < 10°	10° < 50°	50° < 120°	120° >	0.5-3	3-6	6-30	
±0.1	±0.1	±0.2	±0.3	±0.5	±0.8	±1°	±0° 30'	±0° 20'	±0° 10'	±0.2	±0.5	±1	



Drivers	DD
8mm Square	28
10mm Square	27
8mm Hexagon	68
7mm Triangular	37

Please contact us for different driver requests.

Dust Caps Stainless Steel

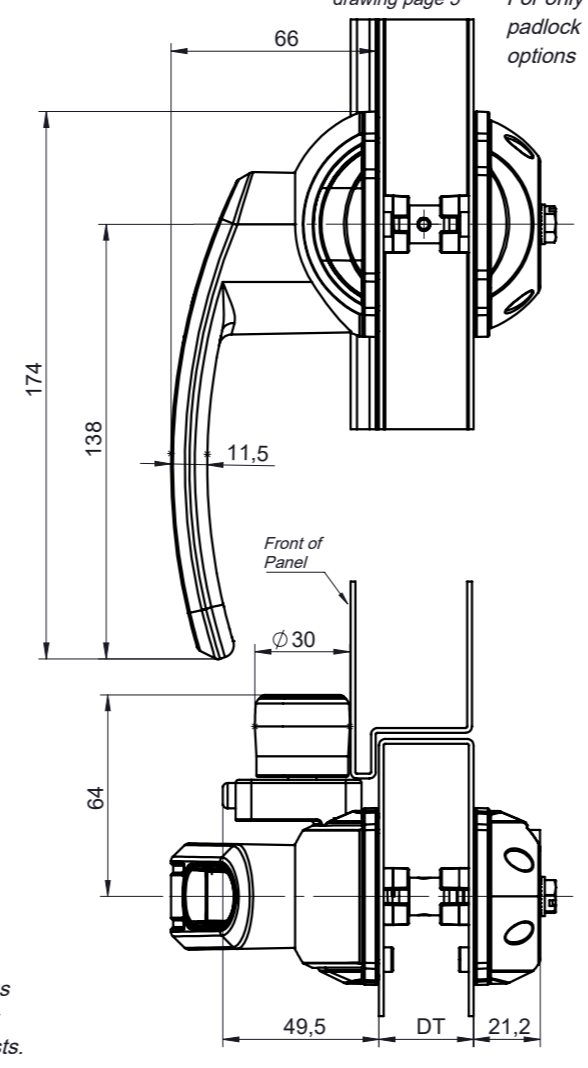


Cylinders	DD
Keyed Alike	03
Keyed Differ	32
Euro Key (5333)	05
No Cylinder	00

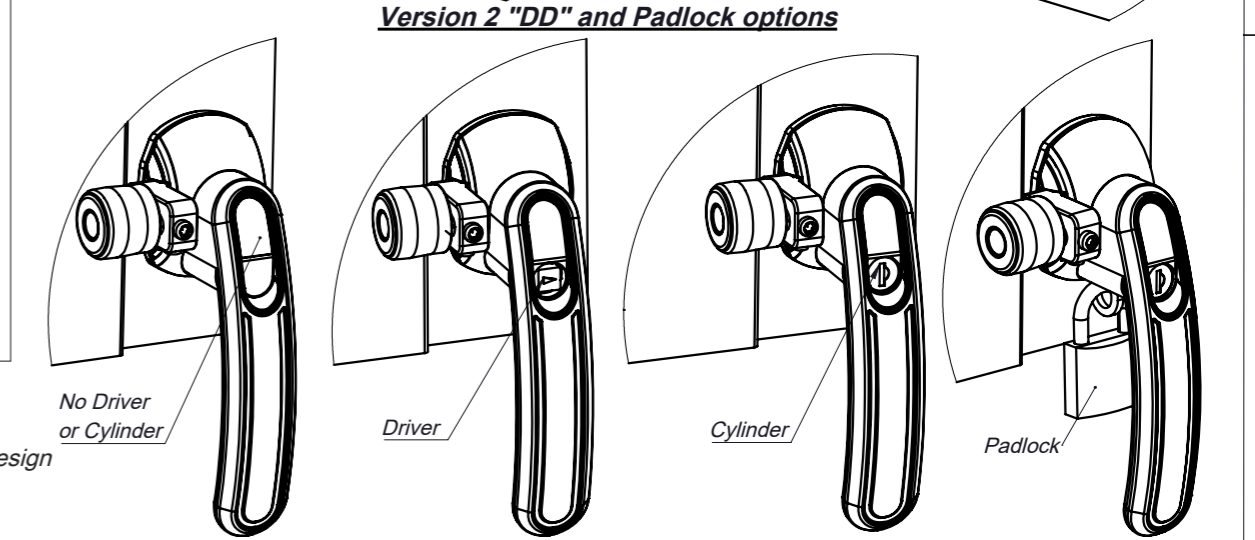
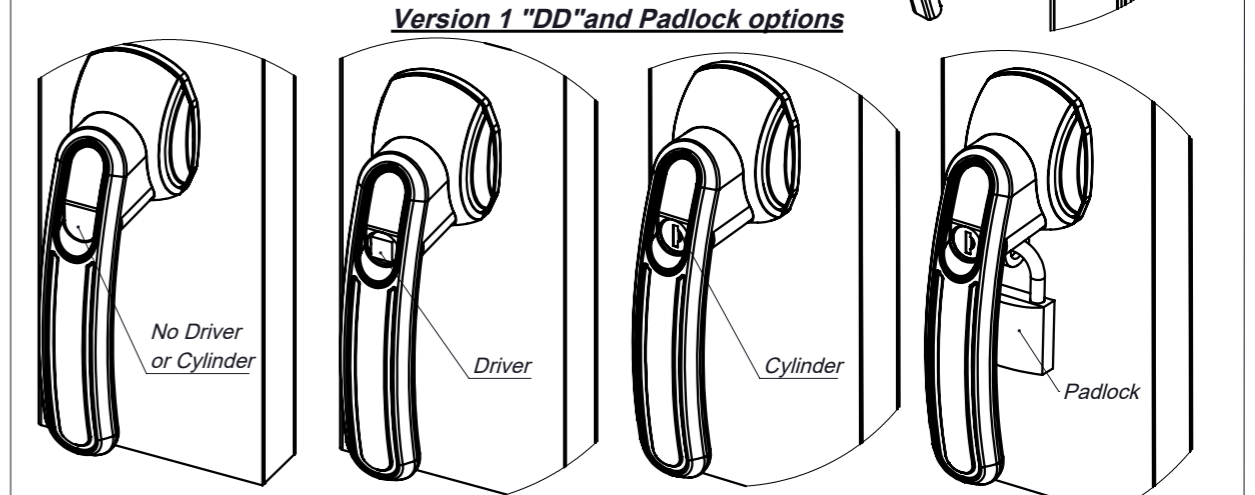
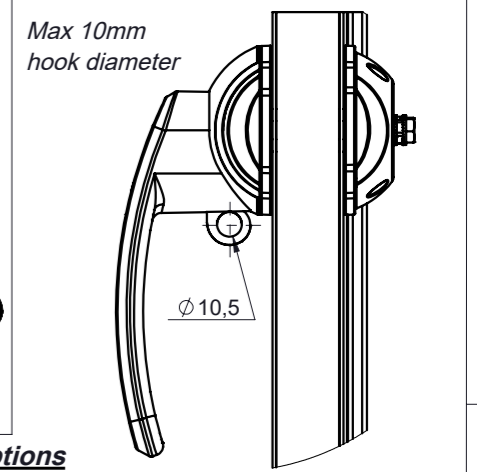
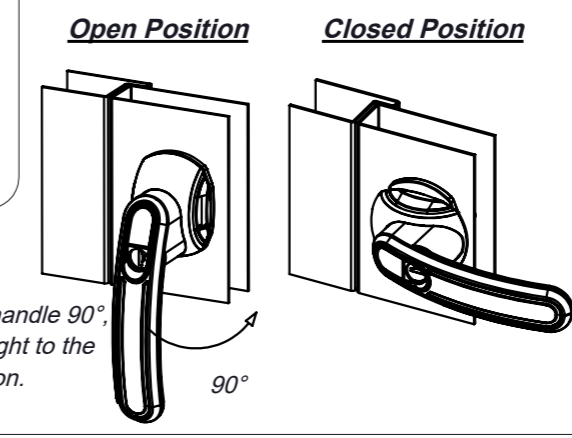
DT
30
40
50
60
70
80

Please contact us for different door thickness requests.

Note: Locking tolerance is ±1,5 mm.



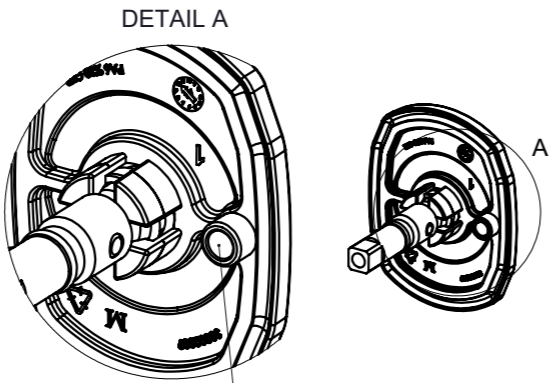
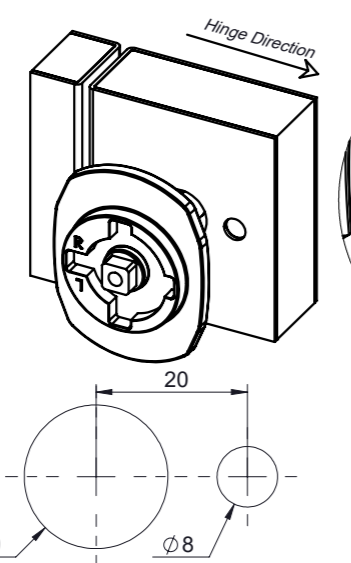
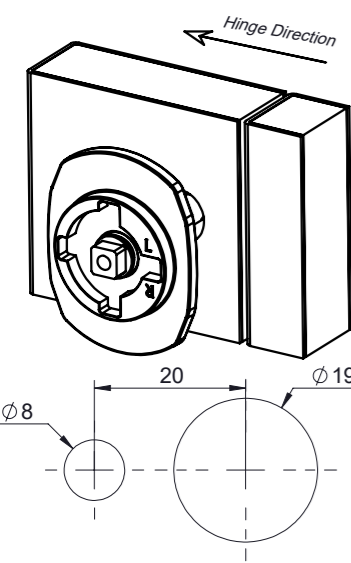
001 - Left Hand  
002 - Right Hand



**Cut Out**

**Left Hand Cut Out (001)**

**Right Hand Cut Out (002)**



The fixing tab on the shaft-mounted part (This is the part that determines the right or left option.) Fixing tab (small hole) towards hinge side of door.

**NOTES :**

- A. Ergonomic and stylish design
- B. Quick fixing
- C. Secure locking
- D. Adjustable grip length options.
- E. Suitable for outward swing doors
- F. Suitable for IP66 sealing class. For more sealing requests please contact us.
- G. All latch components are "RoHS" compliant.
- H. Please contact us for different door thickness, materials and coating requests.
- I. Left and Right hand application options.

Please contact us for packaging details and special packaging requests.

Add "1" for padlock version only.  
**Attention!** For version 1 you don't need to add number for padlockless version. For version 2 necessary to add "0-padlockless" or "1-with padlock". The padlock application "Drivers", "Cylinders" and "No Cylinder or Driver" options are available. See Table for more "Drivers" and "Cylinders" options.

Çizim Tarihi / Drawing Date	09.05.2022	İmza / Signature	Yüzey / Surface	Malzeme / Material	Ağırlık (gr) / Weight	Parça No / Part No
Çizen / Drawn By	Kaan Kanburoğlu		See Table	See Table	-	See Table
Kontrol / Checked By	Kaan Kanburoğlu					
Onay / Approved by	Uğur Büyük					
Parça Adı / Part Name:	112 HVAC Lock					
Rev. No / Change No	Açıklamalar / Description		Değ. Tarih / Change Date	Değ. Yapan / Changed By	İmza / Signature	Bölüm / Department
						Trade Drawing

Resim üzerinden ölçü almayınız! Do not scale drawing!

mesan

H

G

F

E

D

C

B

A

## Assembly

Genel Toleranslar  
General Tolerances

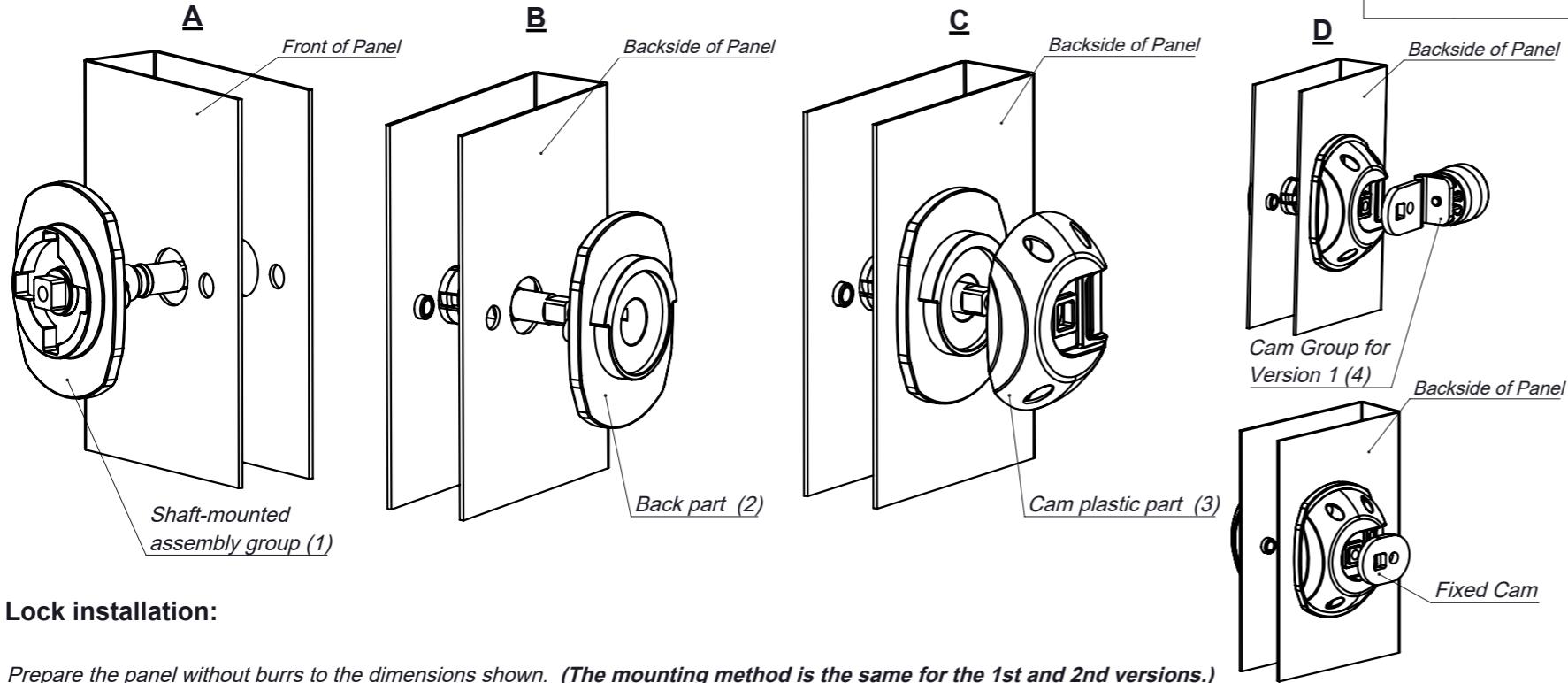
DIN 2768m

Nominal / Nominal

Açı / Angle

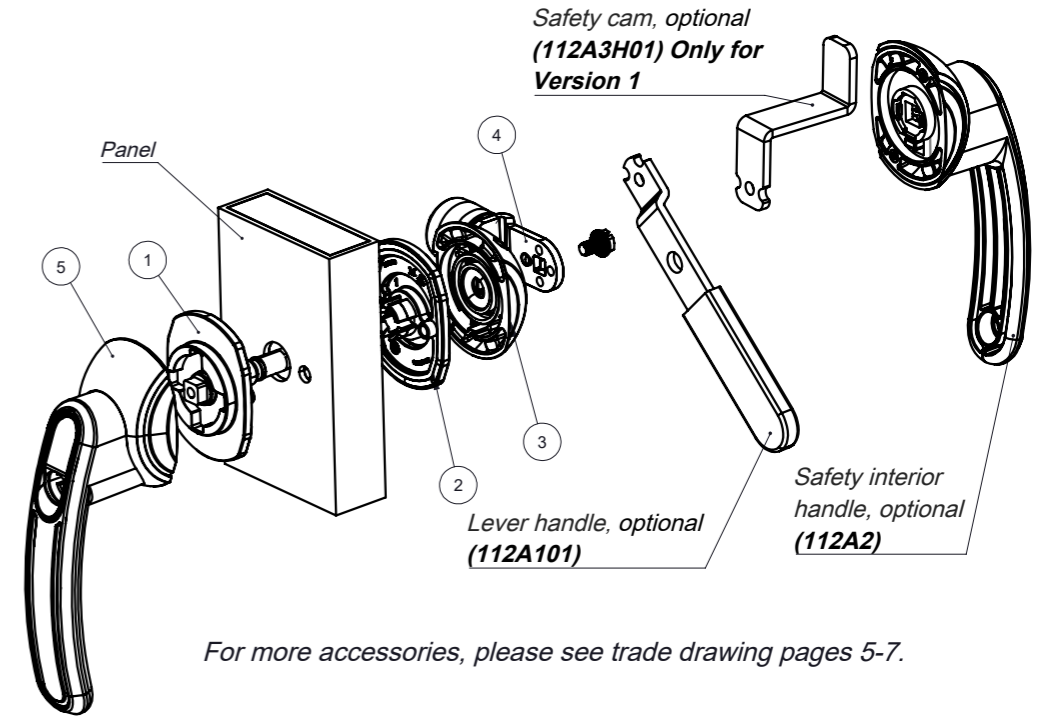
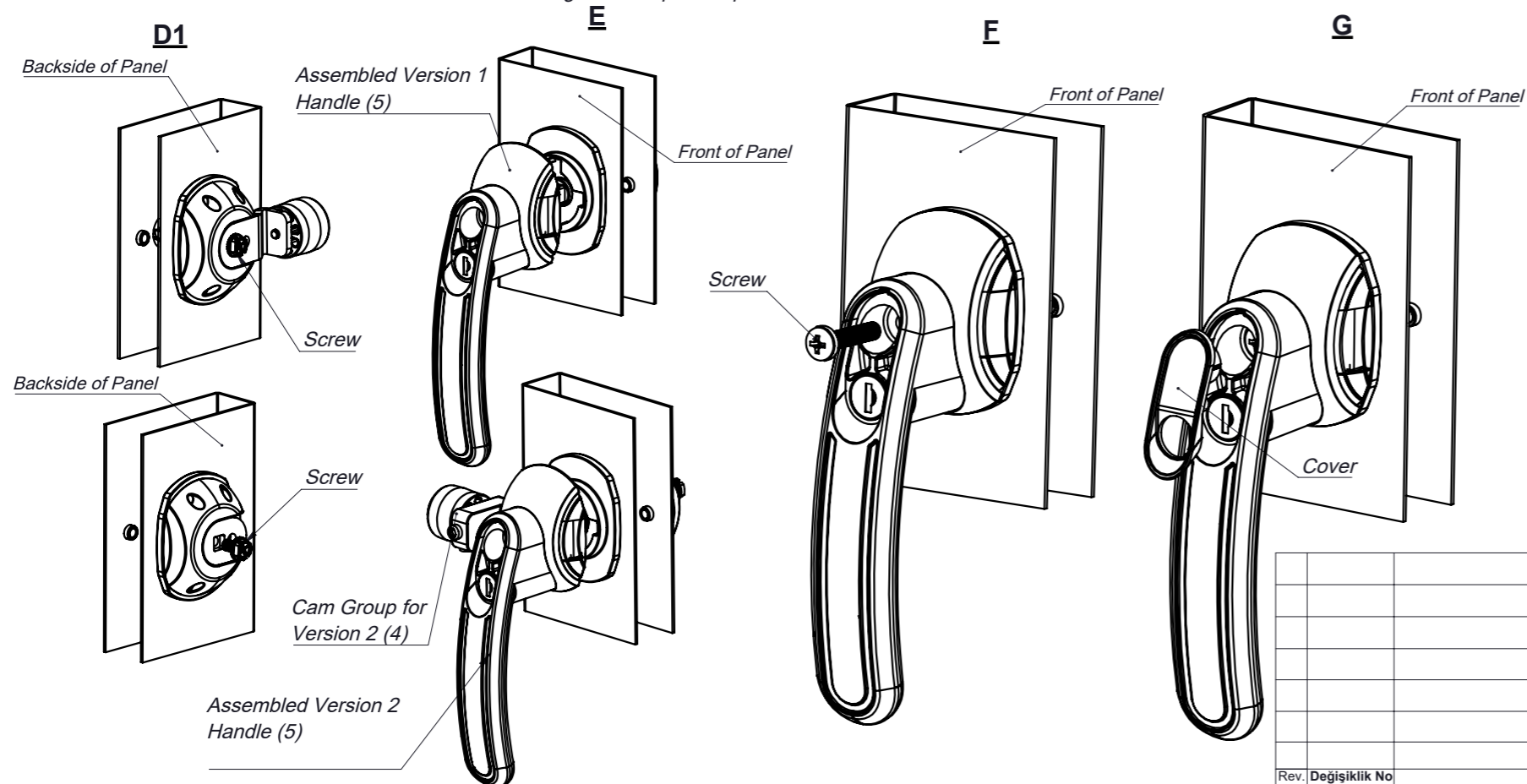
Yarıçap/ Radius

0.5-3	3-6	6-30	30-120	120-400	400 >	0° < 10°	10° < 50°	50° < 120°	120° >	0.5-3	3-6	6-30
±0.1	±0.1	±0.2	±0.3	±0.5	±0.8	±1°	±0° 30'	±0° 20'	±0° 10'	±0.2	±0.5	±1



### Lock installation:

1. Prepare the panel without burrs to the dimensions shown. (The mounting method is the same for the 1st and 2nd versions.)
  - A. Attach the shaft-mounted assembly, which is shown with the number (1) in the exploded picture, to the cut out dimension as shown.
  - B. Attach the back part numbered (2) from the back of the panel to the shaft as shown.
  - C. Attach cam plastic part (3) to back part (2) as shown.
  - D-D1. Attach the requested cam group (4) to the cam plastic part number (3) as shown and fix it by tightening it with bolt. See page 5 of trade drawing for more cam group options. (The fixed cam cannot be changed in Version 2 product, only the cam group in front of the panel can be changed. Version 2 cam options is limited only can be use 112C03 and 112C04.)
  - E. Attach the assembled version 1 or version 2 handle (5) to the shaft-mounted assembly(1) from the front of the panel as shown. According to the requested handle, it is packaged with a cylinder, driver or without driver/cylinder with handle mounted.
  - F. Fix the handle with the bolt.
  - G. Install the cover as shown. The cover varies according to the requested product.



For more accessories, please see trade drawing pages 5-7.

## Material

Product Name	Material	Finish
Handle	PA6GFR30	Black
Driver	Zamak 5	Cr
Cylinder	Zamak 5 (Dust cap stainless steel)	Ni
Cover	PA6GFR30	Black
Shaft	Steel	Zn
Cam Group	Please see page 6	*
Cam plastic part	PA6GFR30	Black
Back Part	PA6GFR30	Black

○ Kritik ölçüler işaretlenmiştir. Critical dimensions are signed.

Resim üzerinden ölçü almayınız! Do not scale drawing!

Çizim Tarihi Drawing Date	09.05.2022	İmza Signature	Yüzey Surface	Malzeme Material	Ağırlık(gr) Weight	Parça No/ Part No
Çizen Drawn By	Kaan Kanburoğlu		See Table	See Table	-	See Table
Kontrol Checked By	Kaan Kanburoğlu					
Onay Approved by	Uğur Büyük					
Parça Adı Part Name:	112 HVAC Lock					
	mm	Ölçek/ Scale	1:2	Sayfa No/ Page No	6 / 2	

Rev. No	Değişiklik No Change No	Açıklamalar Description	Değ. Tarih Change Date	Değ. Yapan Changed By	İmza Signature	Bölüm Department	Trade Drawing	A3
---------	----------------------------	----------------------------	---------------------------	--------------------------	-------------------	---------------------	---------------	----





# Product Code

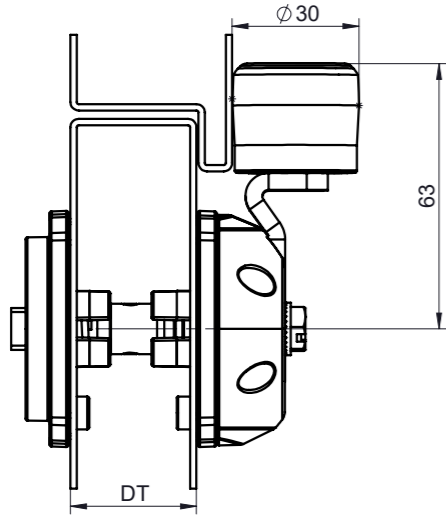
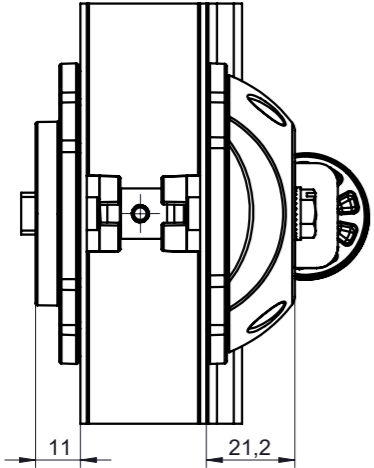
Version 3

Grup Code	Version	Door Thickness	Cam
112	3	DT	CC

See Table For "Cam" options please see trade drawing page 5

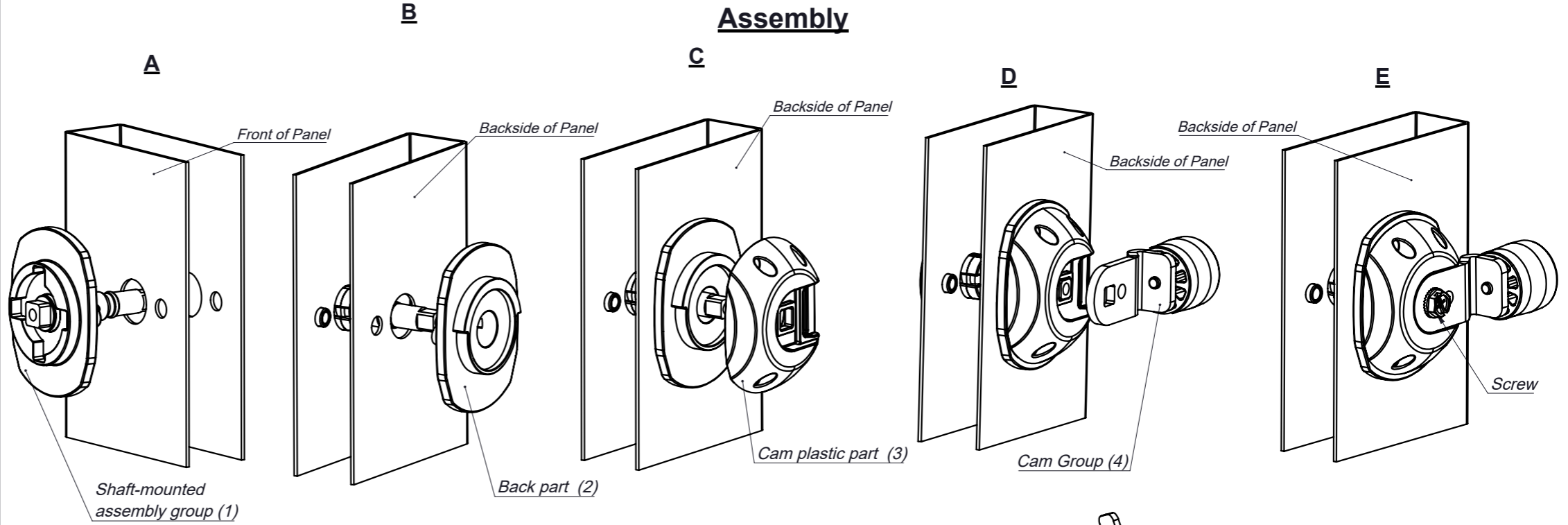
DT
30
40
50
60
70
80

Please contact us for different door thickness requests.



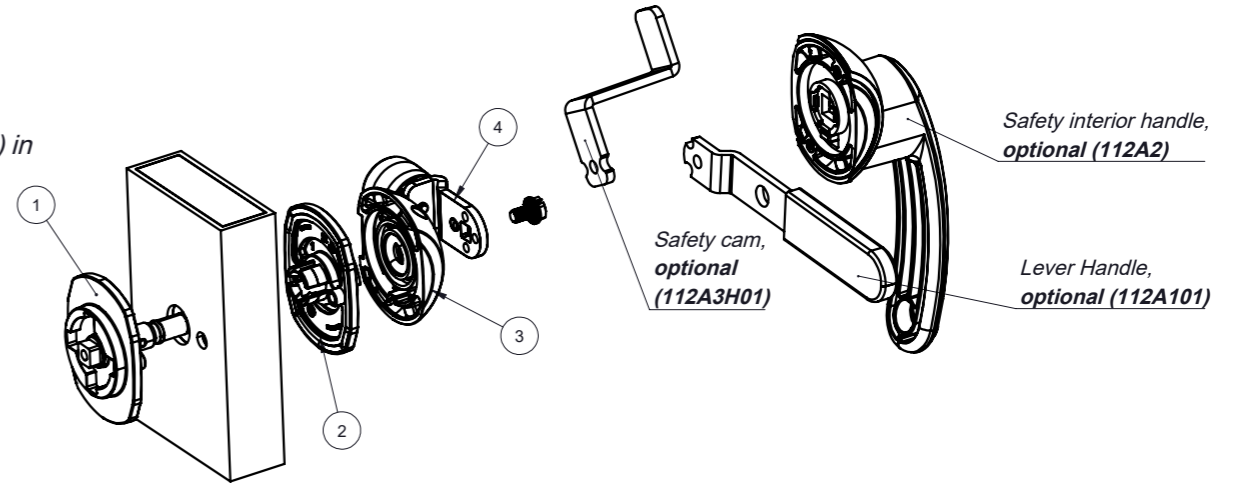
Genel Toleranslar General Tolerances	Nominal / Nominal						Açı / Angle				Yarıçap / Radius		
	0.5-3	3-6	6-30	30-120	120-400	400 >	0° < 10°	10° < 50°	50° < 120°	120° >	0.5-3	3-6	6-30
DIN 2768m	±0.1	±0.1	±0.2	±0.3	±0.5	±0.8	±1°	±0° 30'	±0° 20'	±0° 10'	±0.2	±0.5	±1

## Assembly



### Lock installation:

1. Prepare the panel without burrs to the dimensions shown.
  - A. Attach the shaft-mounted assembly, which is shown with the number (1) in the exploded picture, to the cut out dimension as shown.
  - B. Attach the back part numbered (2) from the back of the panel to the shaft as shown.
  - C. Attach cam plastic part (3) to back part (2) as shown
  - D-E. Attach the requested cam group (4) to the cam plastic part number (3) as shown and fix it by tightening it with bolt. See page 6 of trade drawing for more came group options.

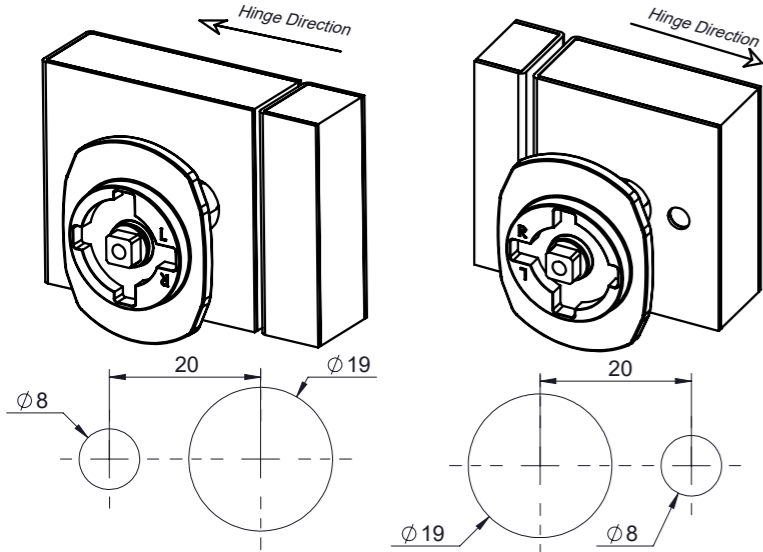


## Cut Out

### Left Hand Cut Out

### Right Hand Cut Out

### DETAIL A



The fixing tab on the shaft-mounted part (This is the part that determines the right or left option.) Fixing tab (small hole) towards hinge side of door.

### NOTES :

- Quick fixing
- Secure locking
- Adjustable grip length options.
- Suitable for IP66 sealing class. For more sealing requests please contact us.
- All latch components are "RoHS" compliant.
- Please contact us for different door thickness, materials and coating requests.
- Left and Right hand application options.
- No handle application

Please contact us for packaging details and special packaging requests.

Product Name	Material	Finish
Shaft	Steel	Zn
Cam Group	Please see page 5	*
Cam plastic part	PA6GFR30	Black
Back Part	PA6GFR30	Black
Shaft Plastic Parts	PA6GFR30	Black

Kritik ölçüler işaretlenmiştir. Critical dimensions are signed.

Resim üzerinden ölçü almayınız! Do not scale drawing!

Çizim Tarihi Drawing Date	09.05.2022	İmza Signature	Yüzey Surface	Malzeme Material	Ağırlık(gr) Weight	Parça No/ Part No
Çizen Drawn By	Kaan Kanburoğlu		See Table	See Table	-	See Table
Kontrol Checked By	Kaan Kanburoğlu					
Onay Approved by	Uğur Büyük					
Parça Adı Part Name:	112 HVAC Lock					
	mm	Ölçek/ Scale	1:2	Sayfa No/ Page No	6 / 3	



Rev. No	Değişiklik No Change No	Açıklamalar Description	Değ. Tarih Change Date	Değ. Yapan Changed By	İmza Signature	Bölüm Department	Trade Drawing

## Product Code

### Version 4

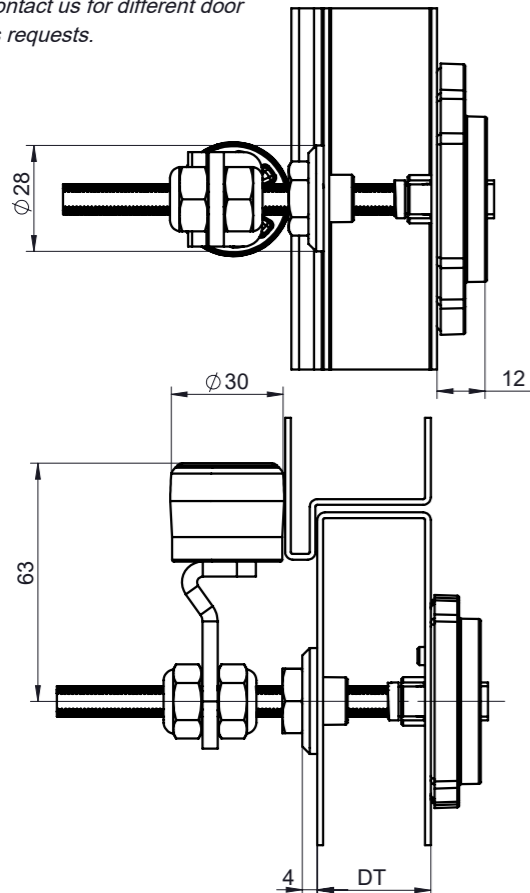
Grup Code	Version	Door Thickness	Cam
112	4	DT	CC

#### DT

20-50mm thickness Panel  
50-80mm thickness Panel

Please contact us for different door thickness requests.

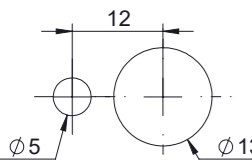
See Table For "Cam" options please see trade drawing page 5



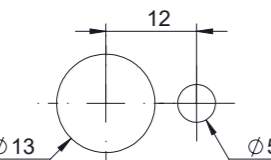
## Cut Out

### Front sheet cut outs

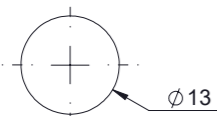
#### Left Hand Cut Out



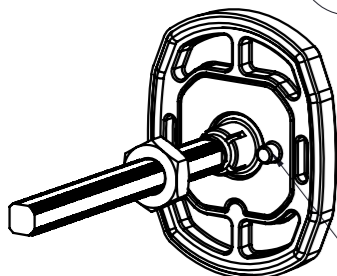
#### Right Hand Cut Out



### Back sheet cut out



Note : Ø5mm hole won't be on back sheet



The fixing tab on the shaft-mounted part (This is the part that determines the right or left option.) Fixing tab (small hole) towards hinge side of door.

Genel Toleranslar  
General Tolerances

DIN 2768m

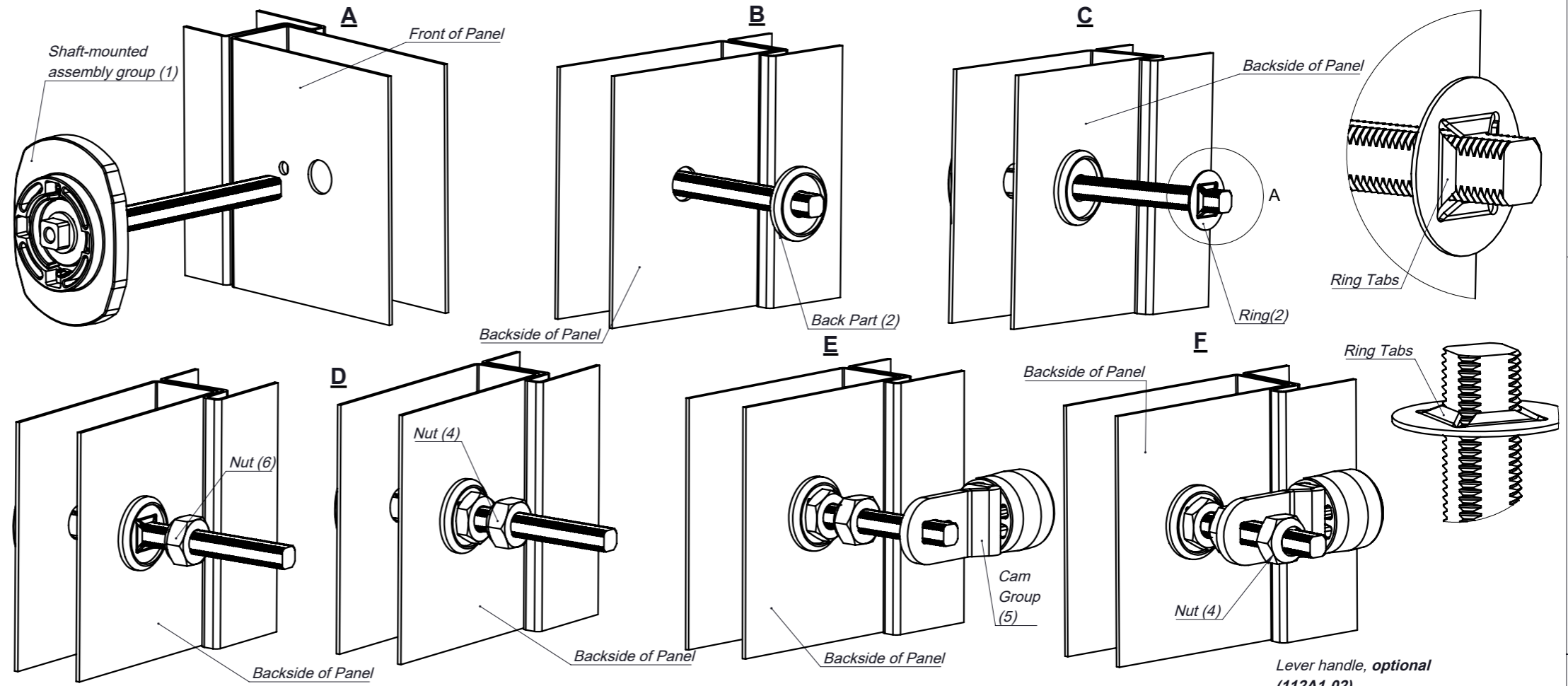
Nominal / Nominal

Açı / Angle

Yarıçap / Radius

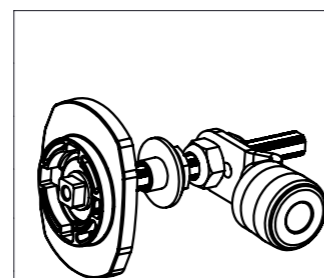
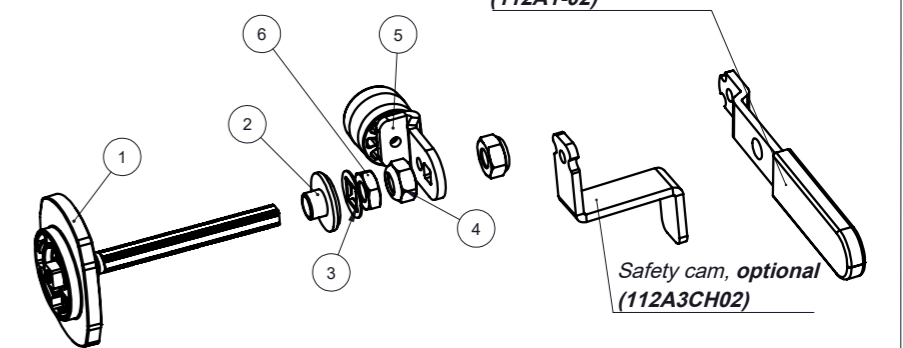
0.5-3	3-6	6-30	30-120	120-400	400 >	0° < 10°	10° < 50°	50° < 120°	120° >	0.5-3	3-6	6-30
±0.1	±0.1	±0.2	±0.3	±0.5	±0.8	±1°	±0° 30'	±0° 20'	±0° 10'	±0.2	±0.5	±1

## Assembly



### Lock installation:

1. Prepare the panel without burrs to the dimensions shown.
- A. Attach the shaft-mounted assembly, which is shown with the number (1) in the exploded picture, to the cut out dimension as shown.
- B. Attach the back part numbered (2) from the back of the panel to the shaft as shown.
- C. Attach cam ring (3) to back part (2) as shown. The orientation of the ring is important. insert the ring tabs as shown in detail A.
- D. Install the nut(6) as shown for fixing assembly. Then fit the nut(4) according to the desired grip size.
- E. Attach the requested cam group(5).
- F. Adjust according to the thickness of the panel to be used and fix it with the nut(4).



Product Name	Material	Finish
Shaft	Steel	Zn
Cam Group	Please see page 6	*
Cam plastic part	PA6GFR30	Black
Back Part	PA6GFR30	Black
Nuts	Steel	Zn
Ring	Steel	Zn

### NOTES :

- Quick fixing
- Secure locking
- Adjustable grip length options.
- Suitable for IP65 sealing class. For more sealing requests please contact us.
- All latch components are "RoHS" compliant.
- Please contact us for different door thickness, materials and coating requests.
- Left and Right hand application options.
- No handle application

Please contact us for packaging details and special packaging requests.

○ Kritik ölçüler işaretlenmiştir. Critical dimensions are signed.

Resim üzerinden ölçü almayınız! Do not scale drawing!

Çizim Tarihi Drawing Date	09.05.2022	İmza Signature	Yüzey Surface	Malzeme Material	Ağırlık(gr) Weight	Parça No/ Part No
Çizen Drawn By	Kaan Kanburoğlu		See Table	See Table	-	See Table
Kontrol Checked By	Kaan Kanburoğlu					
Onay Approved by	Uğur Büyük					
Parça Adı Part Name:	112 HVAC Lock					
	mm	Ölçek/ Scale	1:2	Sayfa No/ Page No	6 / 4	

Rev. No	Değişiklik No Change No	Açıklamalar Description	Değ. Tarih Change Date	Değ. Yapan Changed By	İmza Signature	Bölüm Department	Trade Drawing





# Accessories

*\*Please contact us for packaging details and special packaging requests.*

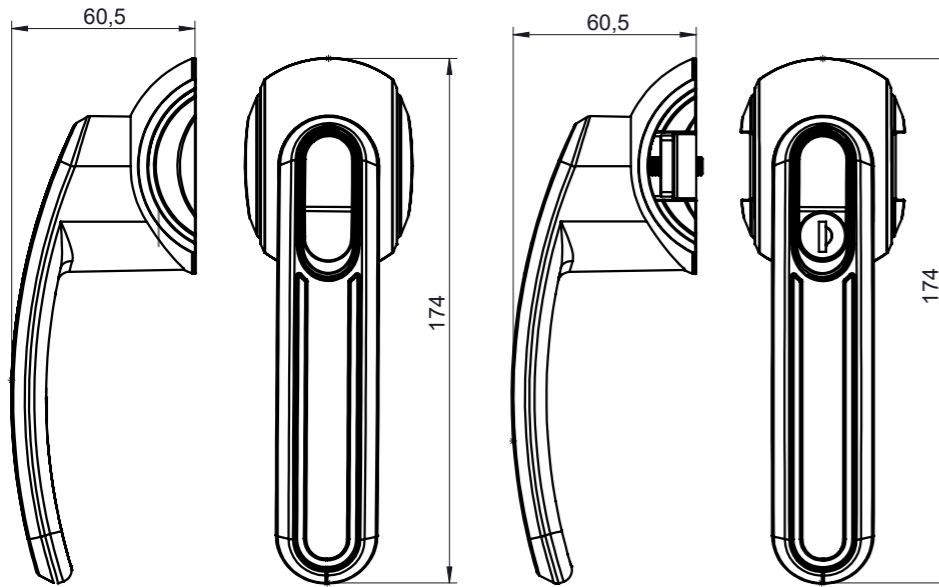
Genel Toleranslar / General Tolerances		Nominal / Nominal						Açı / Angle				Yarıçap / Radius		
0.5-3	3-6	6-30	30-120	120-400	400 >	0° < 10°	10° < 50°	50° < 120°	120° >	0.5-3	3-6	6-30		
±0.1	±0.1	±0.2	±0.3	±0.5	±0.8	±1°	±0° 30'	±0° 20'	±0° 10'	±0.2	±0.5	±1		

## Handles

Grup Code	Version	Driver Cylinder	Padlock	Grup Code	Version	Driver Cylinder	Padlock
112H	1	DD		112H	2	DD	

See Note for Padlock application = 1  
Suitable for outward swing doors

See Note for Padlock application = 1  
Suitable for inward swing doors



Notes : Please check trade drawing page 1 for Driver and Cylinder options. Handles can be ordered individually. Shaft unit is not included.

## Lever Handle

Stock Code	Material; Sheet Part:	Stock Code
112A101	Steel, Zn coated	112A102
Holder Part: Plastic coated		
Colour - Yellow		

Only Version 1, 2 and 3 is used. 143

Only Version 4 is used. 143

The bending dimensions are the same.

## Multi Locking Unit

Stock Code	Material; Cam:	Stock Code
112A501	Steel, Zn coated	112A502
Screw : Steel, Zn coated		
Rod adapter : Zamak 5, Cr coated		

Only Version 1, 2 and 3 is used.

Only Version 4 is used.

The bending dimensions are the same.

## Safety Cam

Stock Code	Stock Code
112A3CH01	112A3CH02

Only Version 1, 2 and 3 is used.

Only Version 4 is used.

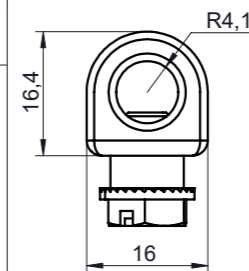
The bending dimensions are the same.

CH
25
50
75
100

Material; Steel, Zn coated

## Rod Adapter

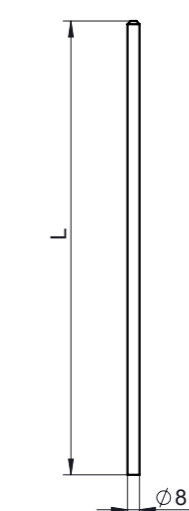
Stock Code
112A4



Material; Steel, Zn coated  
Screw : Steel, Zn coated  
Rod adapter : Zamak 5, Cr coated

## Rod

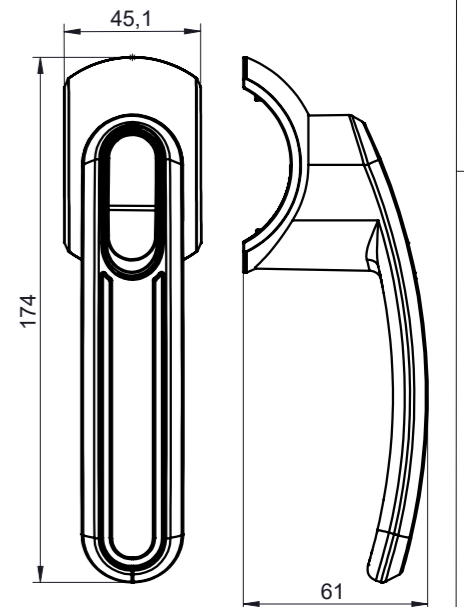
Stock Code
112IC-L



Material; Rod : Steel, Zn coated

## Safety Interior Handle

Stock Code
112A2

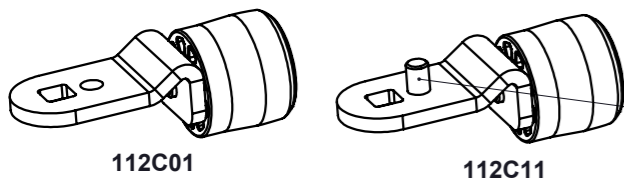


Material; PA6GFR30, Black  
Please contact us for different material and colour requests.

## Cam Groups

Stock Code	CC	Stock Code	CC	Stock Code	CC	Stock Code	CC
112C01	01	112C02	02	112C03	03	112C04	01
112C11	11	112C12	12				

### Example for mult locking cams:

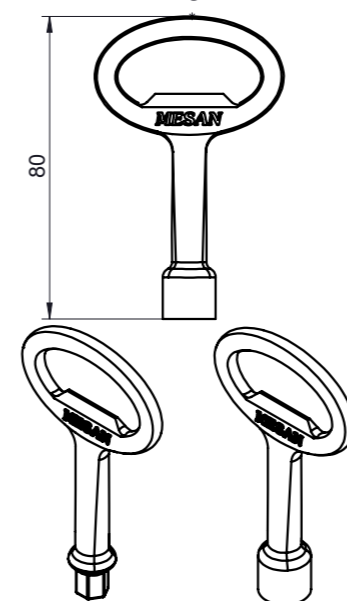


There are multiple locking options because of this pin. When multi-locking is requested, you must select the coded language with "\*" sign.

Material; Version 1 and 2 : Sheet part; Steel, Zn coated  
Roller : PA6gGFR30, Black

Version 3 and 4 : Adjustable Body; Zamak 5, Zn coated  
Roller : PA6gGFR30, Black

## Keys



See page 124 of our catalog for more key options.

## Cover

Stock Code
112A6

Material; PA6GFR30, Black  
Please contact us for different material and colour requests.

Kritik ölçüler işaretlenmiştir. Critical dimensions are signed!  
Resim üzerinden ölçü almayınız! Do not scale drawing!

Çizim Tarihi / Drawing Date	09.05.2022	İmza / Signature	Yüzey / Surface	Malzeme / Material	Ağırlık(gr) / Weight	Parça No / Part No
Çizen / Drawn By	Kaan Kanburoğlu	Onay / Approved by	Uğur Büyük	Ölçek / Scale	1:2	Sayfa No / Page No
Kontrol / Checked By	Kaan Kanburoğlu	Parça Adı / Part Name:	112 HVAC Lock Accessories			
Rev. No / Change No	Değişiklik No / Change No	Açıklamalar / Description	Değ. Tarih / Change Date	Değ. Yapan / Changed By	İmza / Signature	Bölüm / Department
						Trade Drawing

